

Leading Cancer Center Uses Telegenetics to Expand Access to Genetic Services

Need for Genetics Support

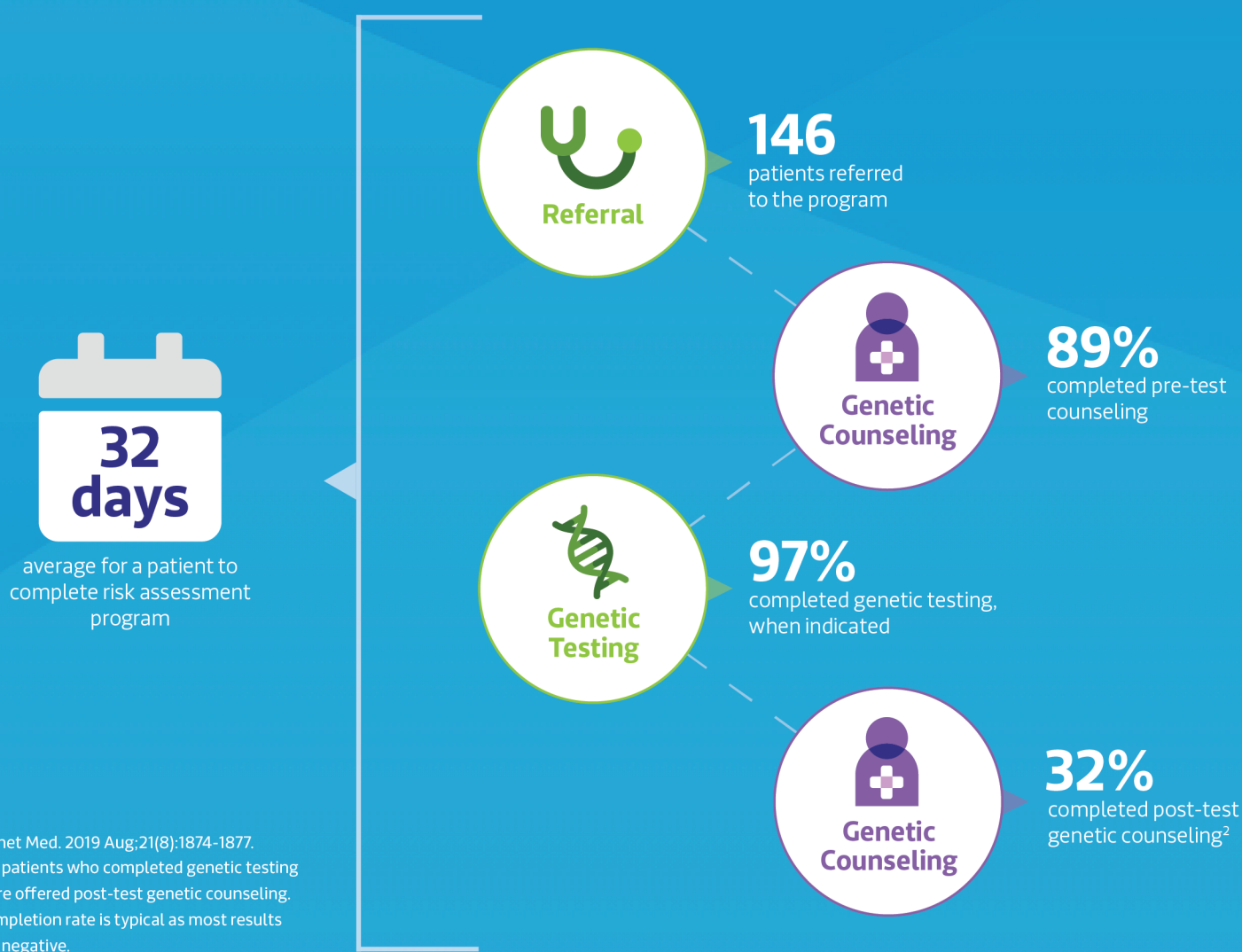
Genetic risk assessment is part of standard clinical care for many cancers. With expansion of guidelines and decreased access to genetic counselors, many institutions have been unable to fulfill this clinical need.

To expand access to genetic services to more patients, while also being able to meet clinical demand, a large west coast health system - and top cancer care system in California - partnered with Genome Medical. Leveraging Genome Medical's large team of genetic counselors and digital health platform, the hospital launched a pilot hybrid telegenetics cancer risk assessment program.



Program Delivers Rapid Access

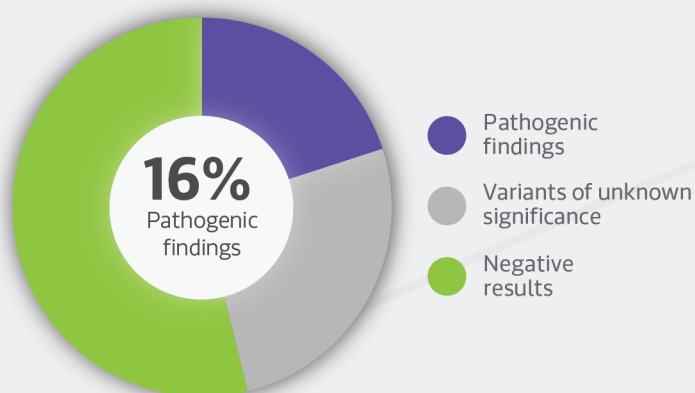
During the pilot, all patients with clinical indication for hereditary genitourinary cancers were referred to Genome Medical to receive pre-test and post-test telegenetic counseling services. It took only a month for patients to complete the risk assessment program, enabling timely follow-on care. In comparison, patients in similar hospital settings can wait up to 3 months for just the initial genetics appointment, not including genetic testing.¹



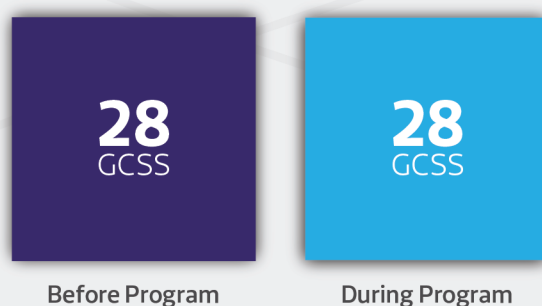
Results Support Telegenetics Model

Results show a hospital/industry partnership model for genetic risk assessment of cancer provides timely access to genetic services, supports risk identification and delivers high-patient satisfaction.

CRITICAL RISK IDENTIFICATION



CONSISTENTLY HIGH PATIENT SATISFACTION



Genetic counseling satisfaction score (GCSS); range from 0-30.